

Our Cabins

- Smoke free inside cabins
- Kitchenettes with dishes, pots & pans, toaster, coffee maker, microwave, refrigerator and stove with oven.
- Cable television
- Lakeview deck
- Lawn chairs and picnic table
- BBQ grill
- Free wireless internet
- Air conditioning/heat

Our Pool Area

- Large in ground pool
- Baby/wading pool
- Large covered poolside cabana
- Game area including pool table, ping pong table, shuffleboard and foosball.
- Horseshoe pit, volleyball & badminton area
- Fire pit
- Covered gathering area with tables and chairs

Our Dock

- Cement launch ramp
- 16 slip lighted boat dock
- GFI electric outlets next to each slip
- Pontoon and fishing boat rentals
- Gas sales available on dock
- Boat slips - \$10/day \$65/week

Our Reservation Policy

Our reservation policy is intended to be fair to all our guests. We are a resort with a limited number of units. Once a guest reserves a unit we remove it from the market. Late arrivals and early departures will be charged for all days reserved.

Deposit refunded only if we are able to fill the vacancy completely.

Area Attractions

- Kimberling City-4 miles
- Silver Dollar City-9 miles
- Branson-15 miles
- Eureka Springs-35 miles
- Springfield/Bass Pro Shop- 50 miles
- Branson Landing/Bass Pro Shop - 20 miles

2012 Rates Summer Rates Memorial Day – Labor Day

Two Bedroom Duplex

Sleeps up to 6/side

Cabin # 1-4 Daily: \$90/side
*1-2 Guests Weekly: \$590/side

Two Bedroom Individual

Sleeps up to 6

Cabin # 5-12 Daily: \$96
*1-2 Guests Weekly: \$620

Deluxe Two Bedroom 1 1/2 Bath

Sleeps up to 6

Cabin# 14 Daily: \$155
*1-4 Guests Weekly: \$990

Four Bedroom 2 Bath

Sleeps up to 12

Cabin # 00 Daily: \$203
*1-6 Guests Weekly: \$1,300

***Additional Guests-\$10/night \$65/week**

We reserve the right to limit the number of guests in a cabin.

SORRY, NO PETS ALLOWED & SMOKE FREE INSIDE CABINS.

Check in time after 3:00 PM
Check out time before 10:00AM

2012 Rates Spring, Fall & Winter Rates

Two Bedroom Duplex

Sleeps up to 6/side

Cabin # 1-4 Daily: \$63/side
*1-2 Guests

Two Bedroom Individual

Sleeps up to 6

Cabin # 5-12 Daily: \$69
*1-2 Guests

Deluxe Two Bedroom 1 1/2 Bath

Sleeps up to 6

Cabin # 14 Daily: \$117
*1-4 Guests

Four Bedroom 2 Bath

Sleeps up to 12

Cabin # 00 Daily: \$158
*1-6 Guests

***Additional Guests - \$10/night**

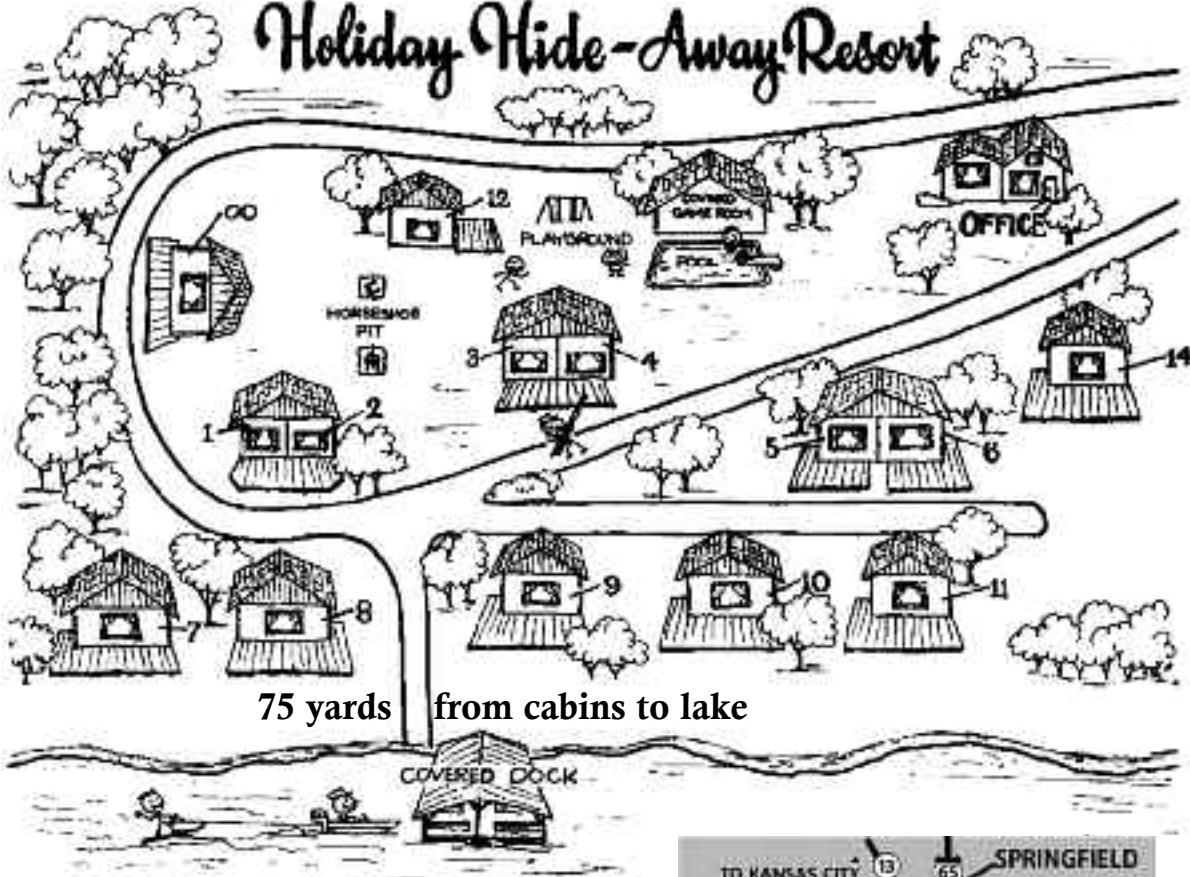
We accept cash, check, Visa, MC and Discover.
We require a deposit with your reservation.

We request payment in full on arrival.

Contact resort for boat rental information

We sell fishing permits
See our Website for Specials
Fishing Guide referrals available

Holiday Hide-Away Resort



Aunt's Creek Area
TABLE ROCK LAKE

Directions to Holiday Hide-Away Resort

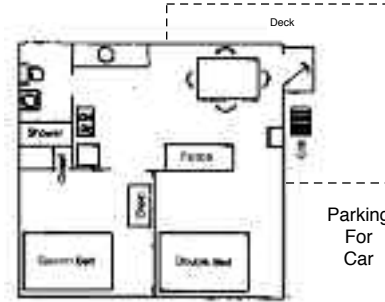
From Springfield, MO

South on Highway 65
West on EE at Highlandville
South on Route 13
West on Highway OO
South on OO-9 to Resort

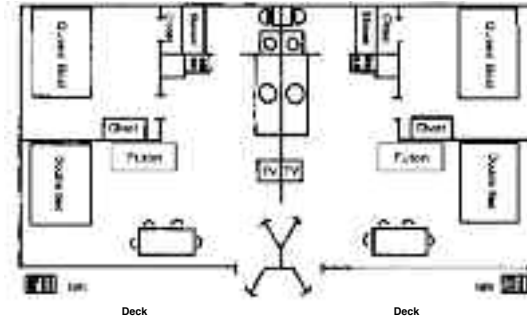
Look for our signs on your way!



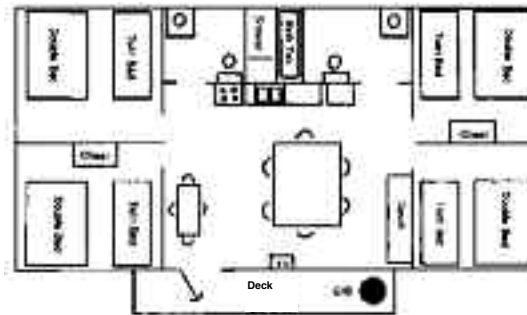
2 BEDROOM INDIVIDUAL COTTAGE



2 BEDROOM DUPLEX COTTAGE



DELUXE 4 BEDROOM COTTAGE



2 BEDROOM 1 1/2 BATH COTTAGE



Holiday Hide-Away Resort

Lake Front Resort
On Beautiful Table Rock Lake



Your Hosts: Carl and Sue Sieveking
Holiday Hide-Away Resort
10 Holiday Hide-Away Court
Branson West, MO 65737
(417) 739-4542

Website: www.holidayhideaway.com
E-mail: holidayhideaway@centurytel.net
Facebook: Holiday Hideaway Resort